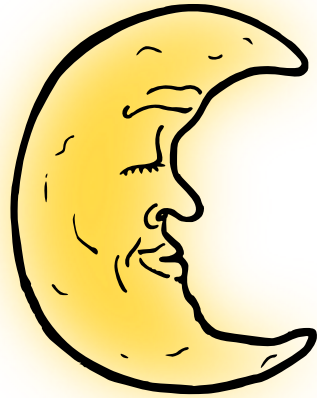


**MOO**

moo



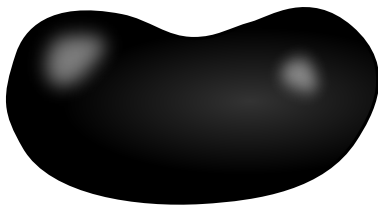
moon



bone



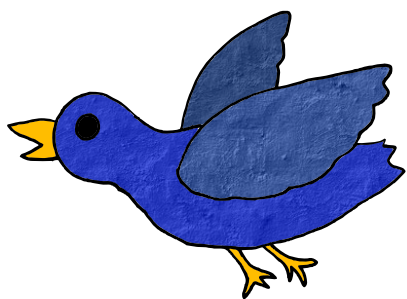
bow



bean



bee



bird



burr!



pop



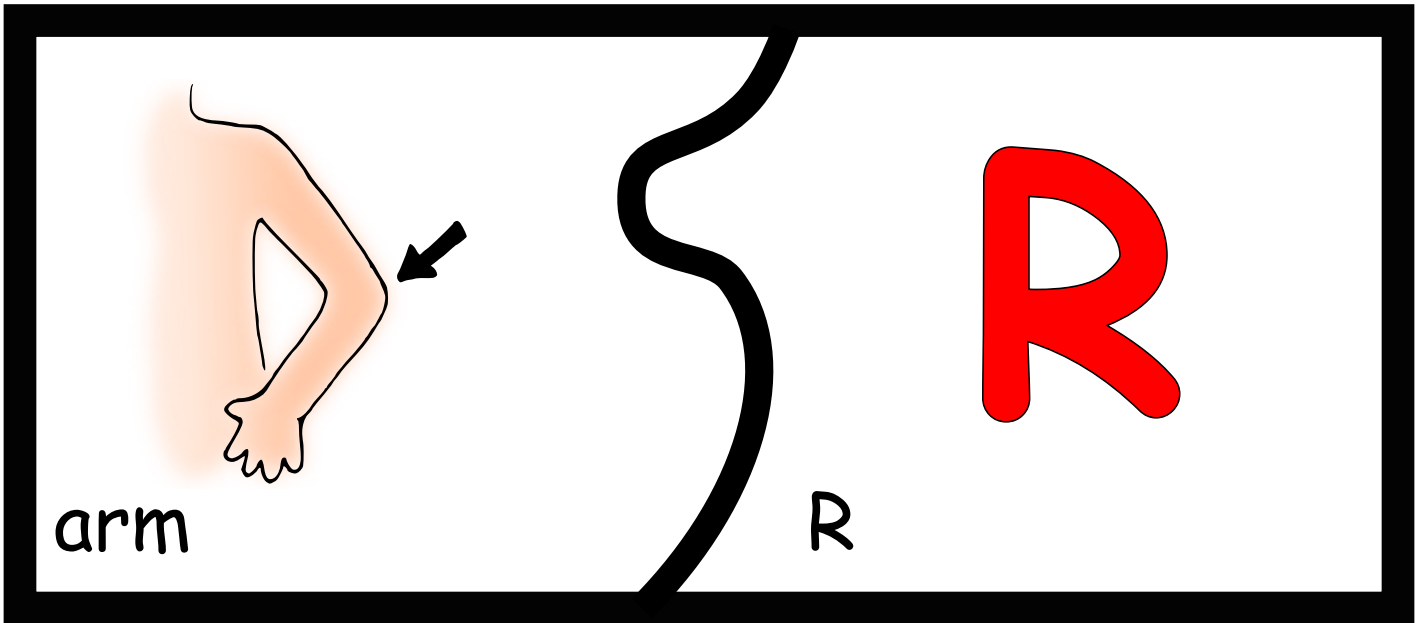
paw



boom



boo

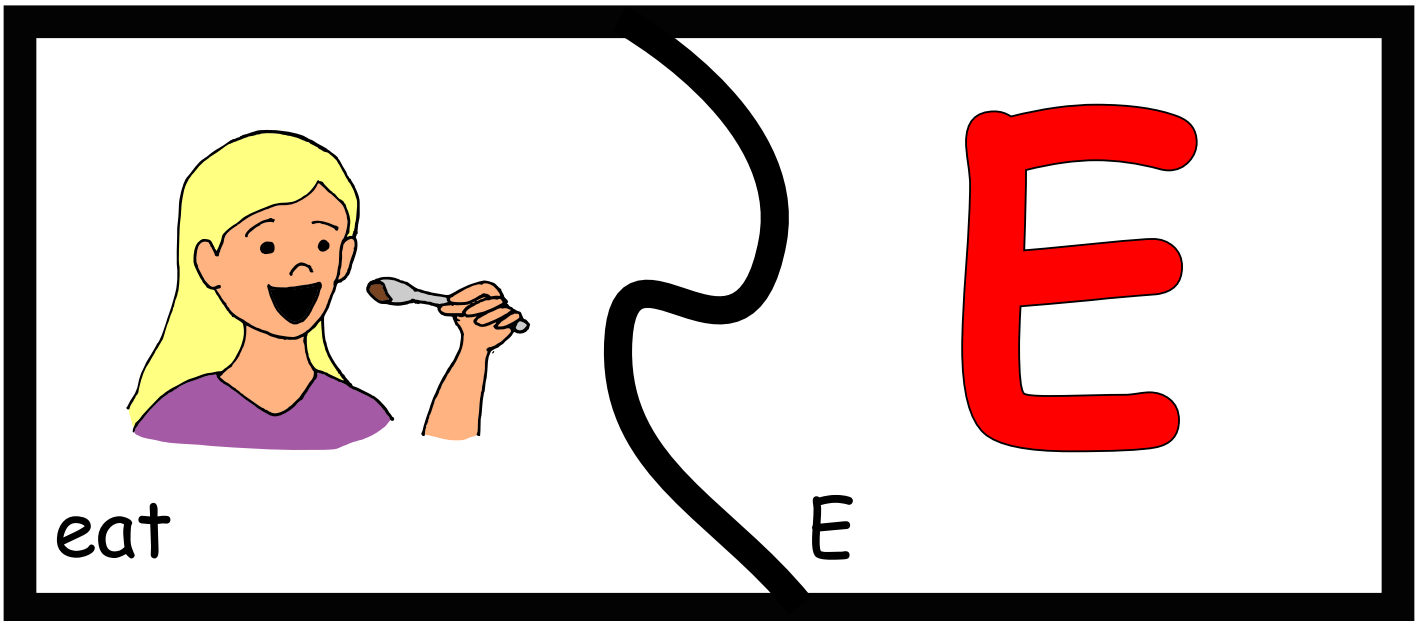


arm

R

R

This puzzle card is divided into two panels by a thick black wavy line. The left panel shows a cartoon illustration of a person's arm with a black arrow pointing to the elbow. Below the illustration is the word "arm". The right panel shows a large red uppercase letter "R" and a smaller black uppercase letter "R" below it.

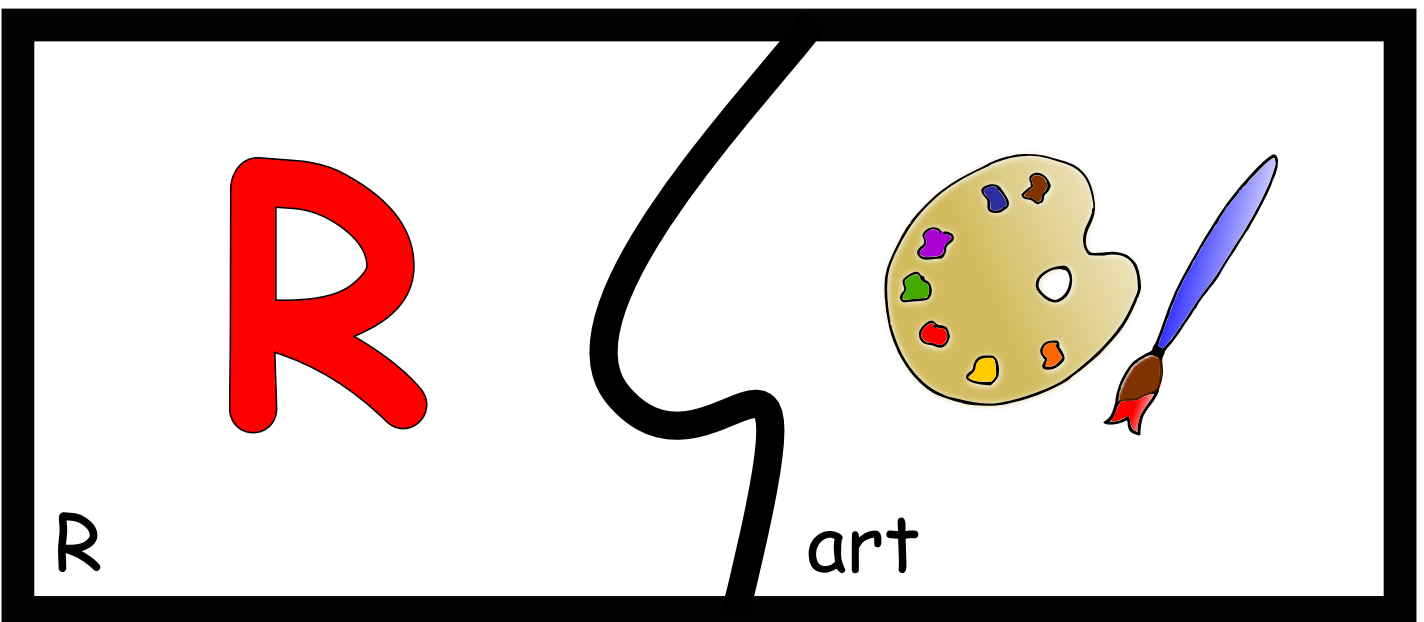


eat

E

E

This puzzle card is divided into two panels by a thick black wavy line. The left panel shows a cartoon illustration of a woman with blonde hair eating from a spoon. Below the illustration is the word "eat". The right panel shows a large red uppercase letter "E" and a smaller black uppercase letter "E" below it.



R

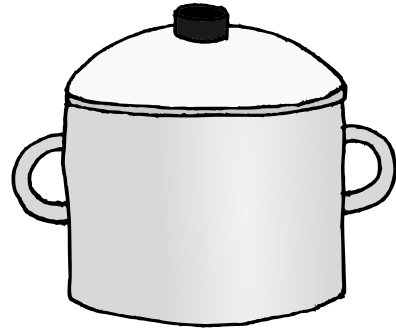
art

R

This puzzle card is divided into two panels by a thick black wavy line. The left panel shows a large red uppercase letter "R" and a smaller black uppercase letter "R" below it. The right panel shows a cartoon illustration of an artist's palette with various colored paint spots and a paintbrush with blue bristles and a brown tip.



paw



pot



boo



boot



bow



boat