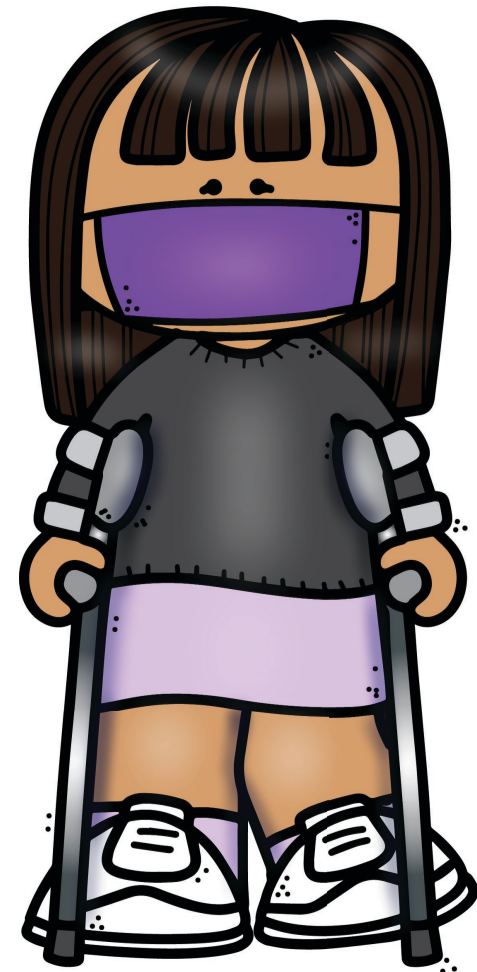


Mask Etiquette



When I wear a mask, there are
some things I can do to keep
from spreading germs.



I should wash my hands or use
hand sanitizer before I put
my mask on.



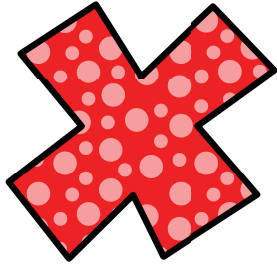
It is best to only touch the ear
loops when I hold my mask.!



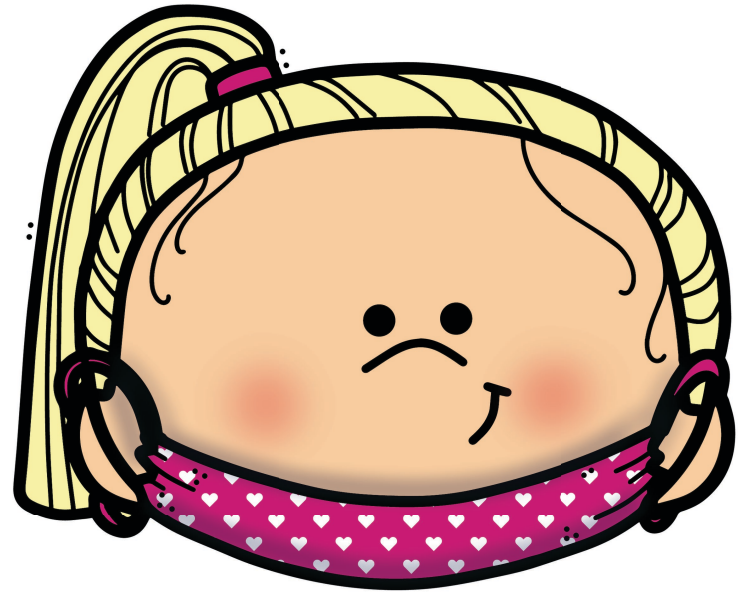
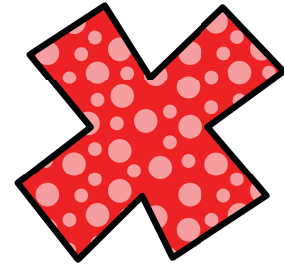
To put my mask on, I put
a loop around each ear.



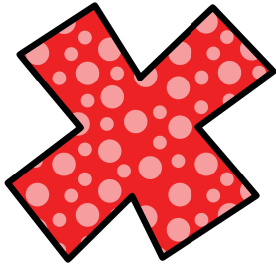
My mask should not be too
loose or too tight. It should
fit just right.



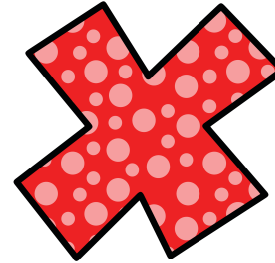
My nose should stay
under the mask.



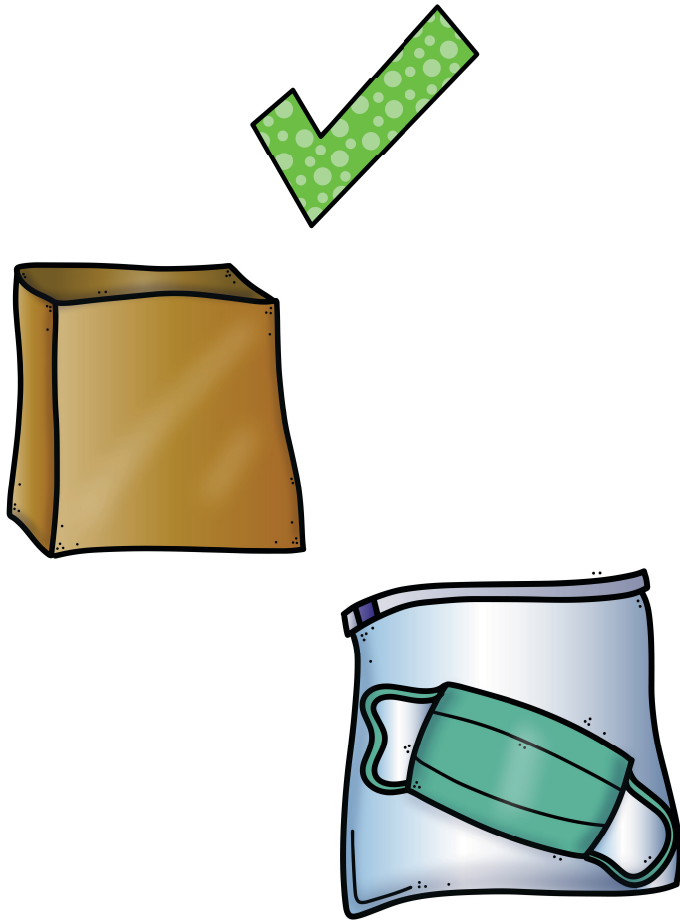
My mouth should stay
under the mask.



I can try my best to not touch my mask when it is on.



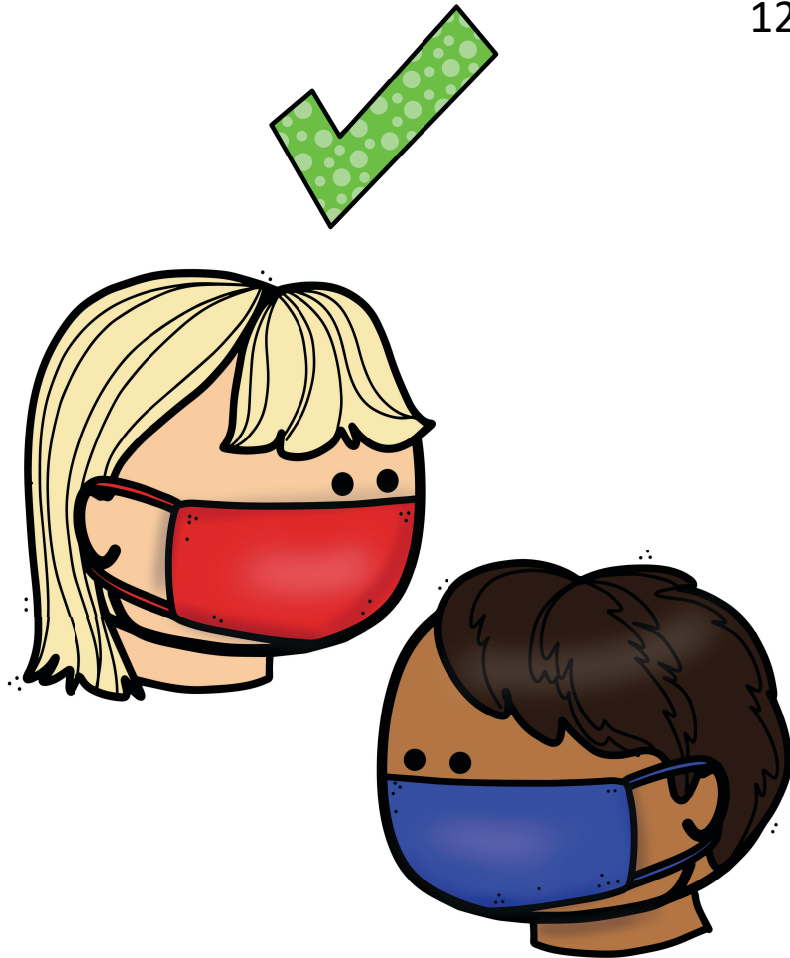
I should only wear my own mask. It is not okay to share masks with other people.



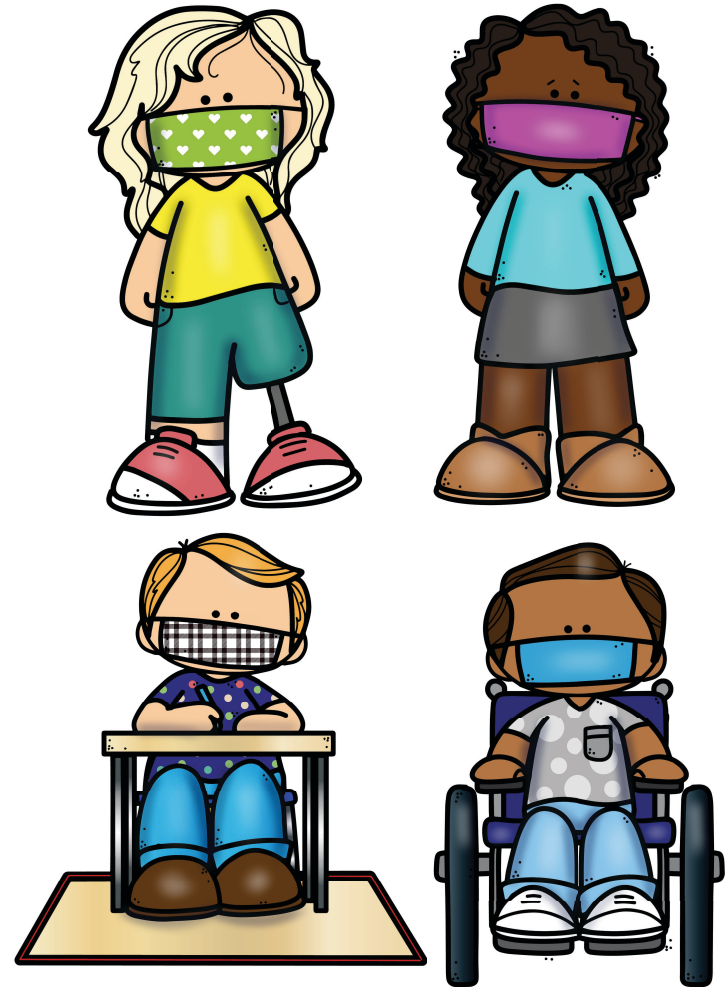
Some schools have bags to store masks. If my school uses bags, my teacher will show me what to do.



After I take my mask off, I should wash or sanitize my hands again.



My teachers and family will be so proud of me when I wear my mask so it covers both my mouth and nose!



Wearing a mask can help prevent the spread of germs when I wear it the right way!

Terms Of Use



AUTISM little LEARNERS

Resources and ideas for families *and* educators

This product is free, and I give you permission to distribute, copy and use for educational purposes. You may not post it as your own. Please give credit and provide a link to Autism Little Learners on Facebook.. You can also refer people to my website: www.autismlittlelearners.com

Connect!



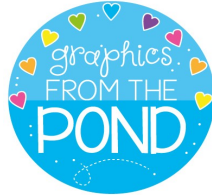
AUTISM little LEARNERS

WEBSITE/BLOG



Instagram

Credits



Thank you for purchasing this activity from my store! I hope you find these materials as useful as I have in my classroom. Be sure to come back for newly added products!

Thank You!

♥ tara TUCHEL

Speech/Language Pathologist